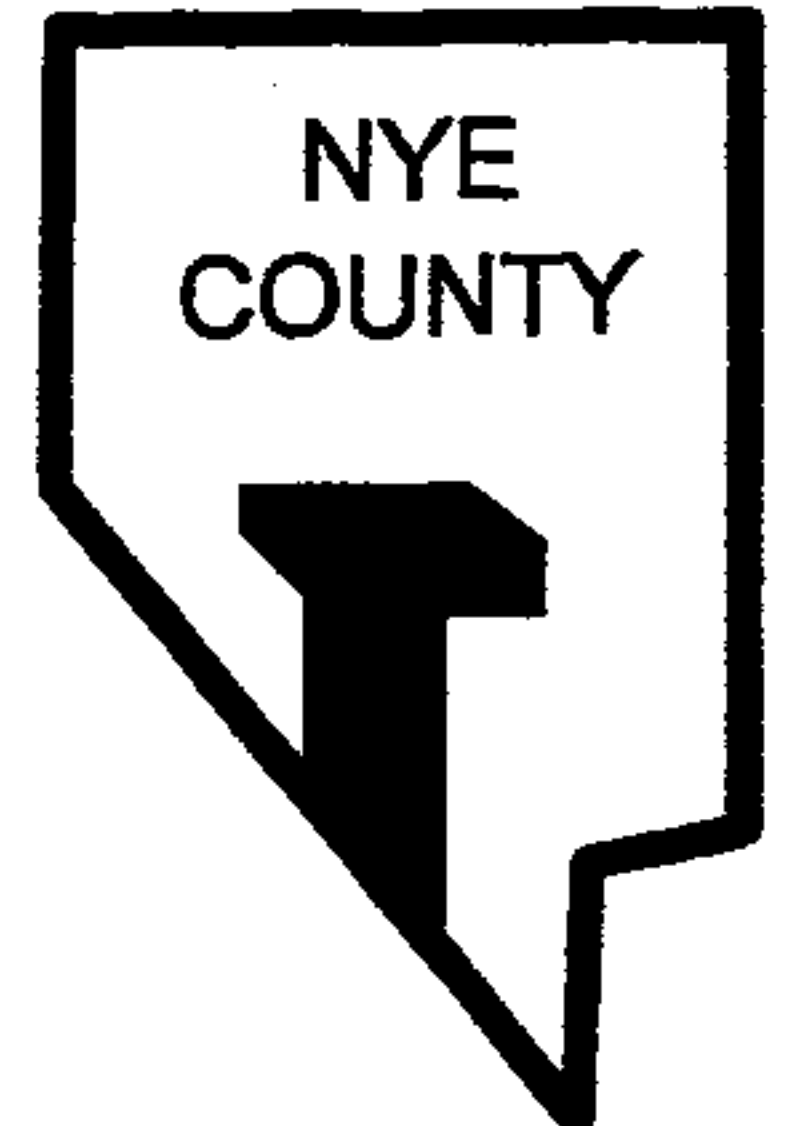


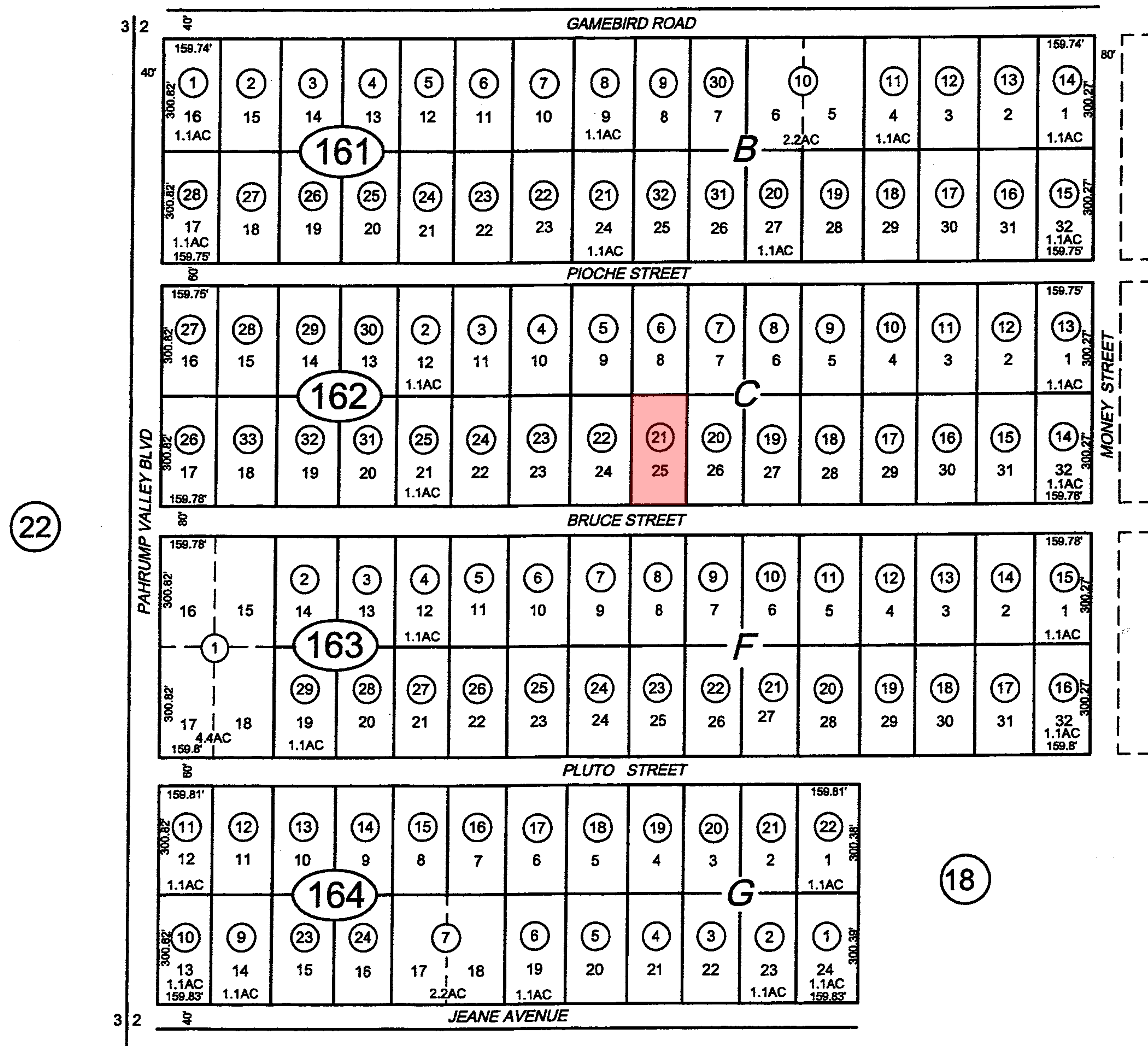
BK
41

T.21S., R.53E. POR.OF
NW1/4 OF SEC. 2

44-16



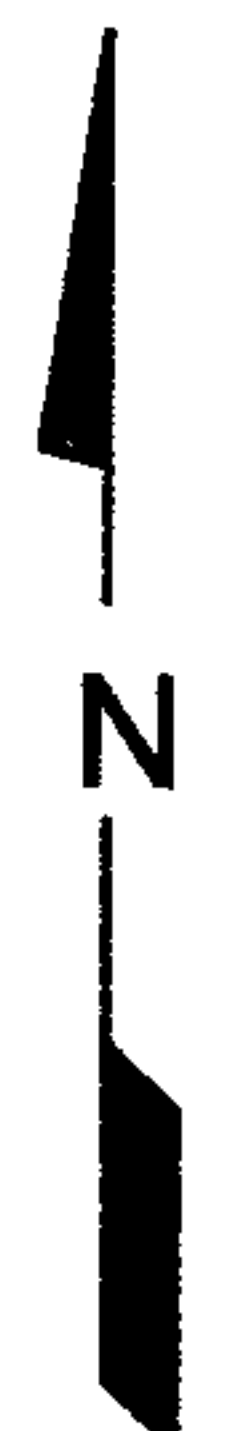
REV. 08-13-84
11-02-89
05-01-95



17

22

18



APR.82/JH
CAD FILE 04-12-01/CM
NYE COUNTY ASSESSOR

Nye County
NOTE: This plat is for assessment use only and does not represent a survey. No liability is assumed as to the accuracy of the data delineated hereon.

21

GAMEBIRD