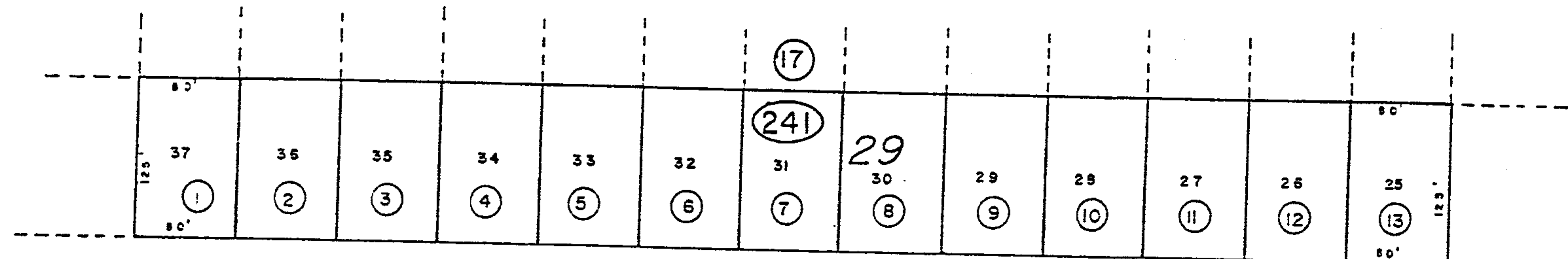
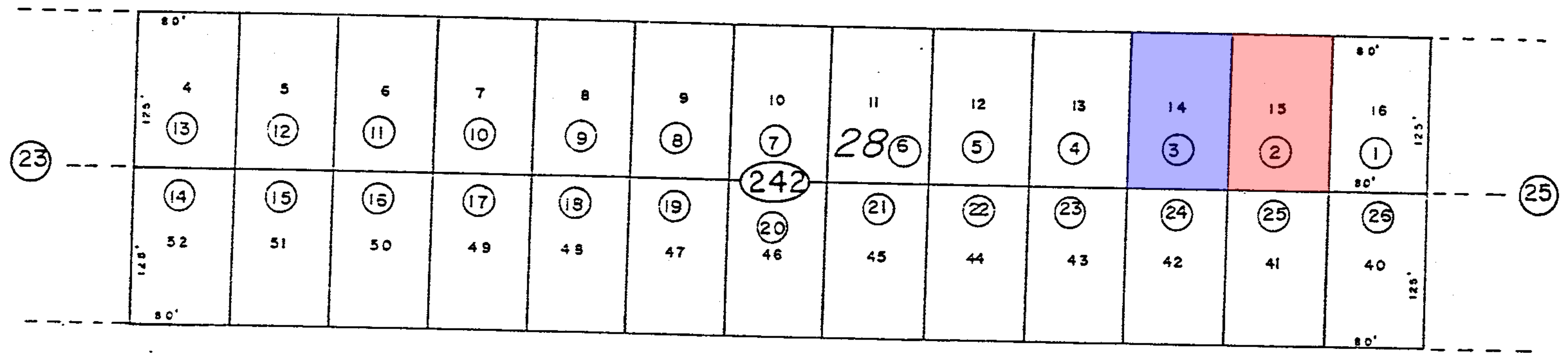


T.19 S., R.53 E.
PORT. OF SEC. 8 & 17

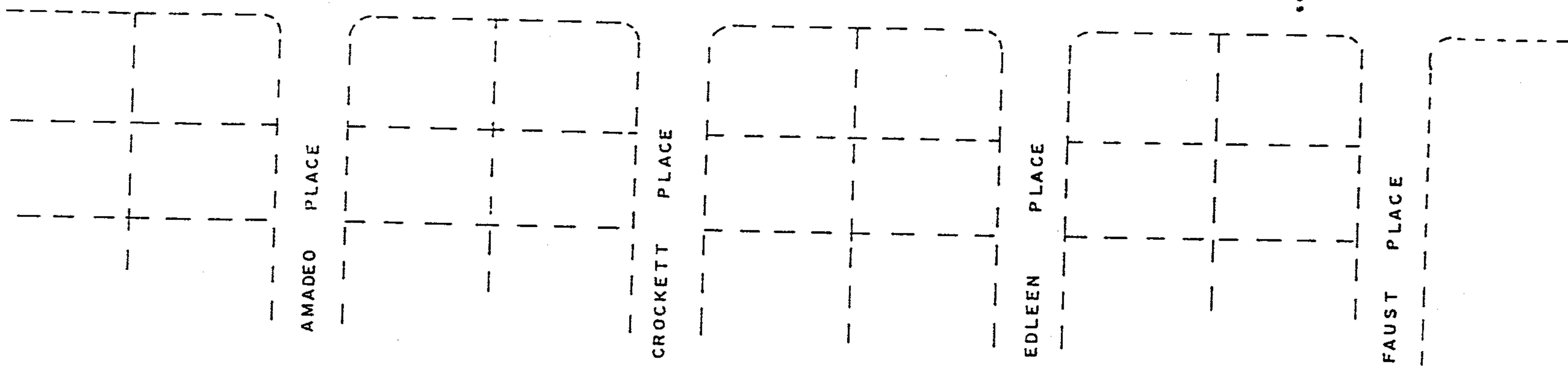
31-24



100' LAST CHANCE ROAD 100'



80' COMETA LANE 80'

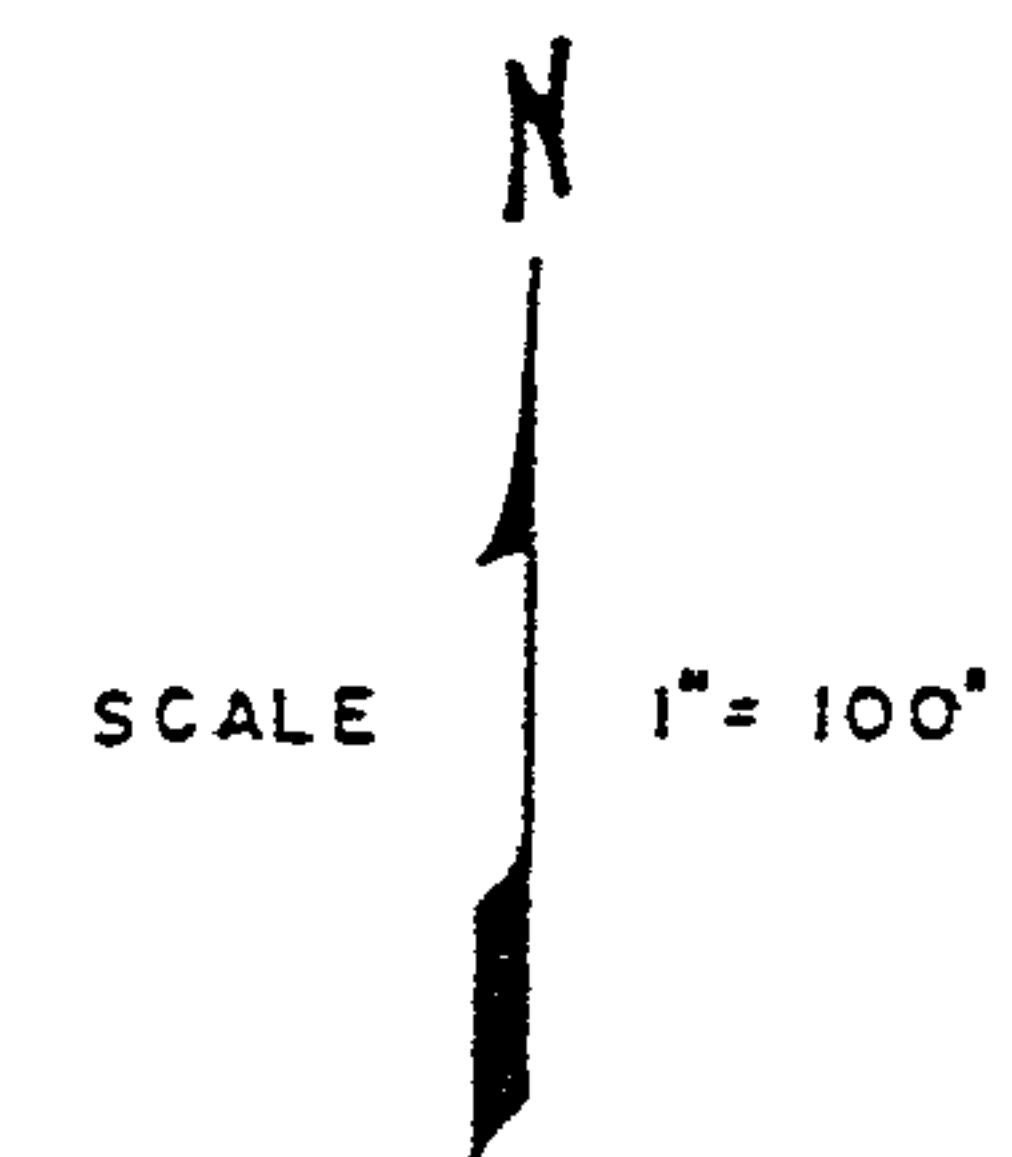


AMADEO PLACE

CROCKETT PLACE

EDLEEN PLACE

FAUST PLACE



2025 80/10/2025
NYE COUNTY ASSESSOR

31

Nye County

UNIT 3
CALVADA VALLEY NORTH

NOTE: This plat is for assessment use only and does not represent a survey. No liability is assumed as to the accuracy of the data delineated hereon.