

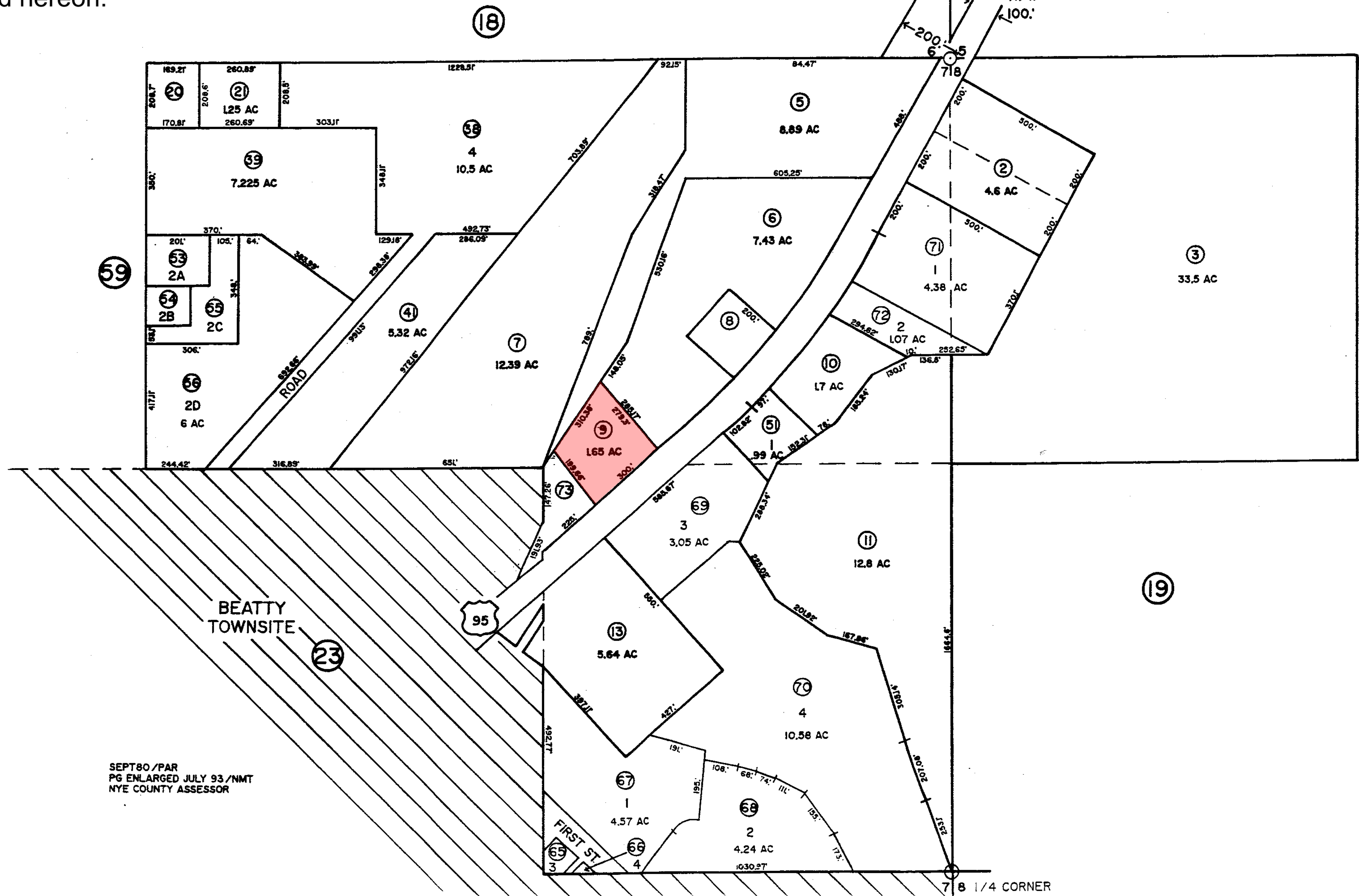
Nye County

NOTE: This plat is for assessment use only and does not represent a survey. No liability is assumed as to the accuracy of the data delineated hereon.

T12S, R47E  
 NW1/4 NE1/4; NE1/4 NE1/4;  
 SE1/4 NE1/4 OF SEC.7 &  
 NW1/4 NW1/4 OF SEC.8

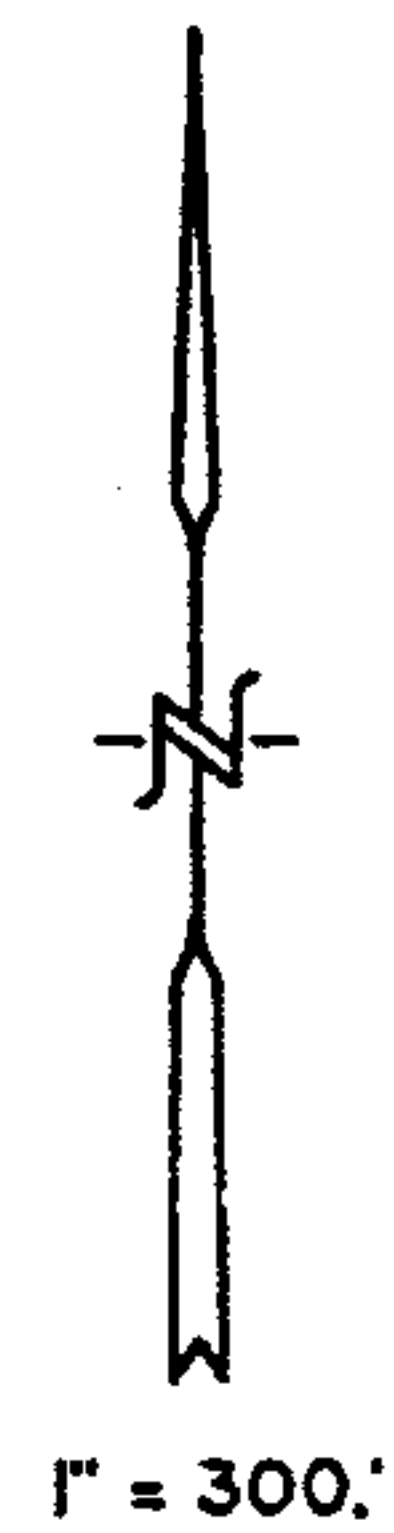
18-20

- Rev 7/10/86
- 1/29/87
- 9/13/87
- 1/17/90
- 4/1/91
- 9/16/91
- 9/28/92
- 7/8/93
- 8/7/97
- 2/25/98
- 5/19/98
- 10/30/00



SEPT80/PAR  
 PG ENLARGED JULY 93/NMT  
 NYE COUNTY ASSESSOR

WI/16 SEC. LINE, SEC.8



7 8 1/4 CORNER