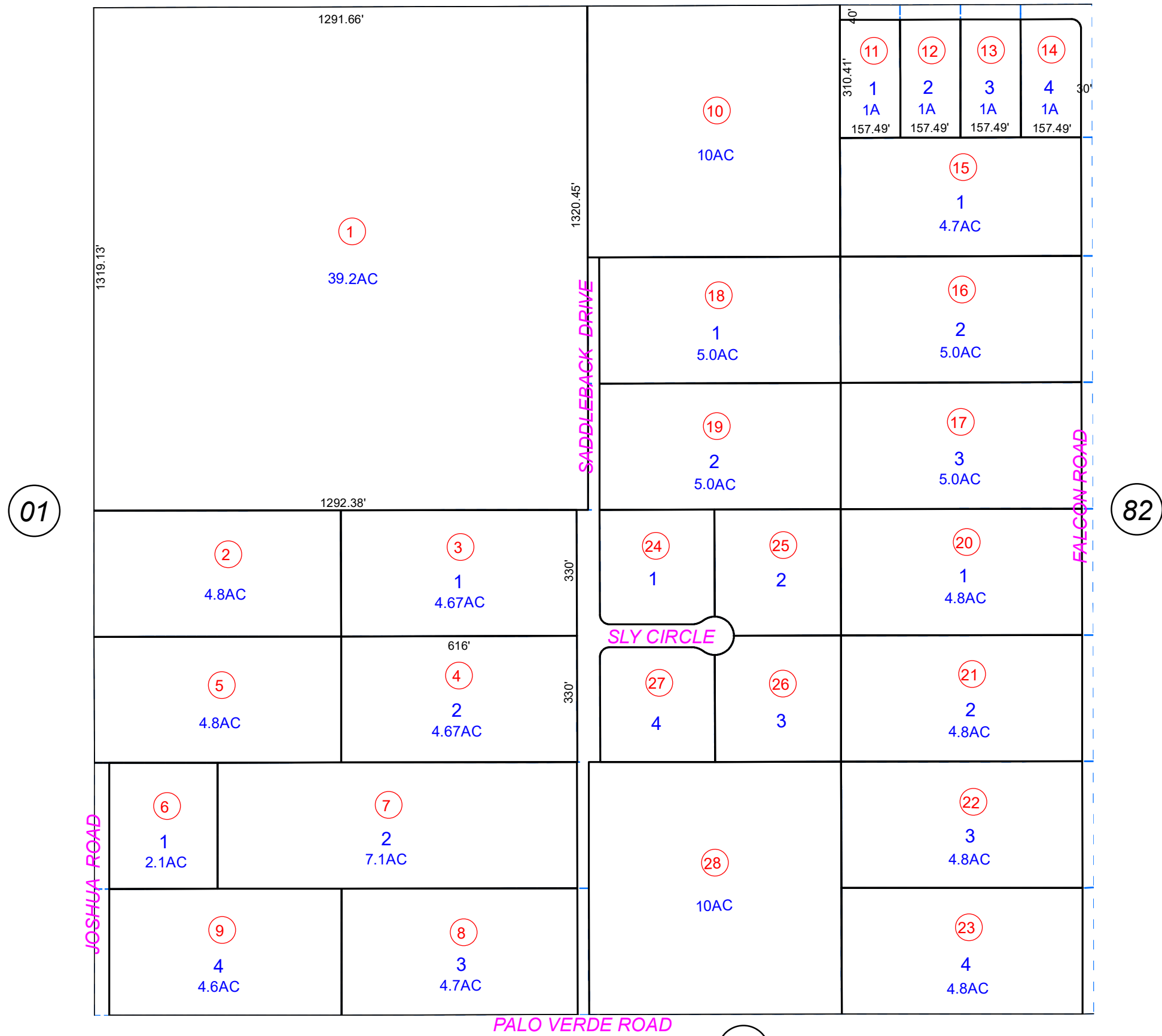


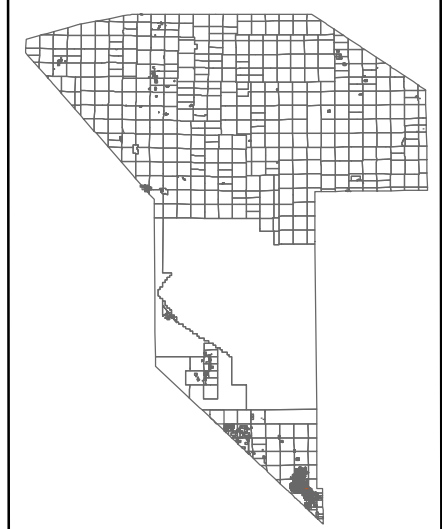
T16S, R48E
 POR. OF SEC. 7
 FRONTIER STREET

03



019-86

COUNTY LOCATOR



LEGEND

* DENOTES LOTS THAT EXTEND TO THE MIDDLE OF THE STREET.

Plot Date: 4/15/2020

PREPARED BY
NYE COUNTY
ASSESSOR'S OFFICE
 Email: assessor@co.nye.nv.us



NOTE: THIS PLAT IS FOR ASSESSMENT USE ONLY AND DOES NOT REPRESENT A SURVEY. NO LIABILITY IS ASSUMED AS TO THE ACCURACY OF THE DATA DELINEATED HEREON.

04