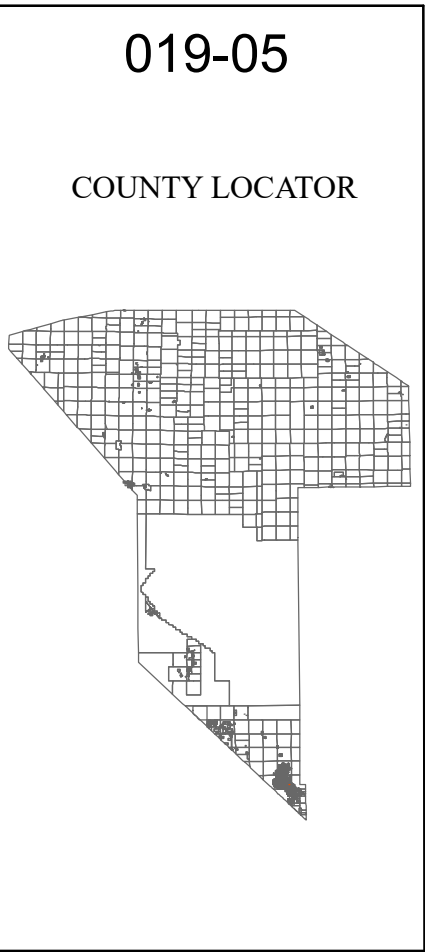
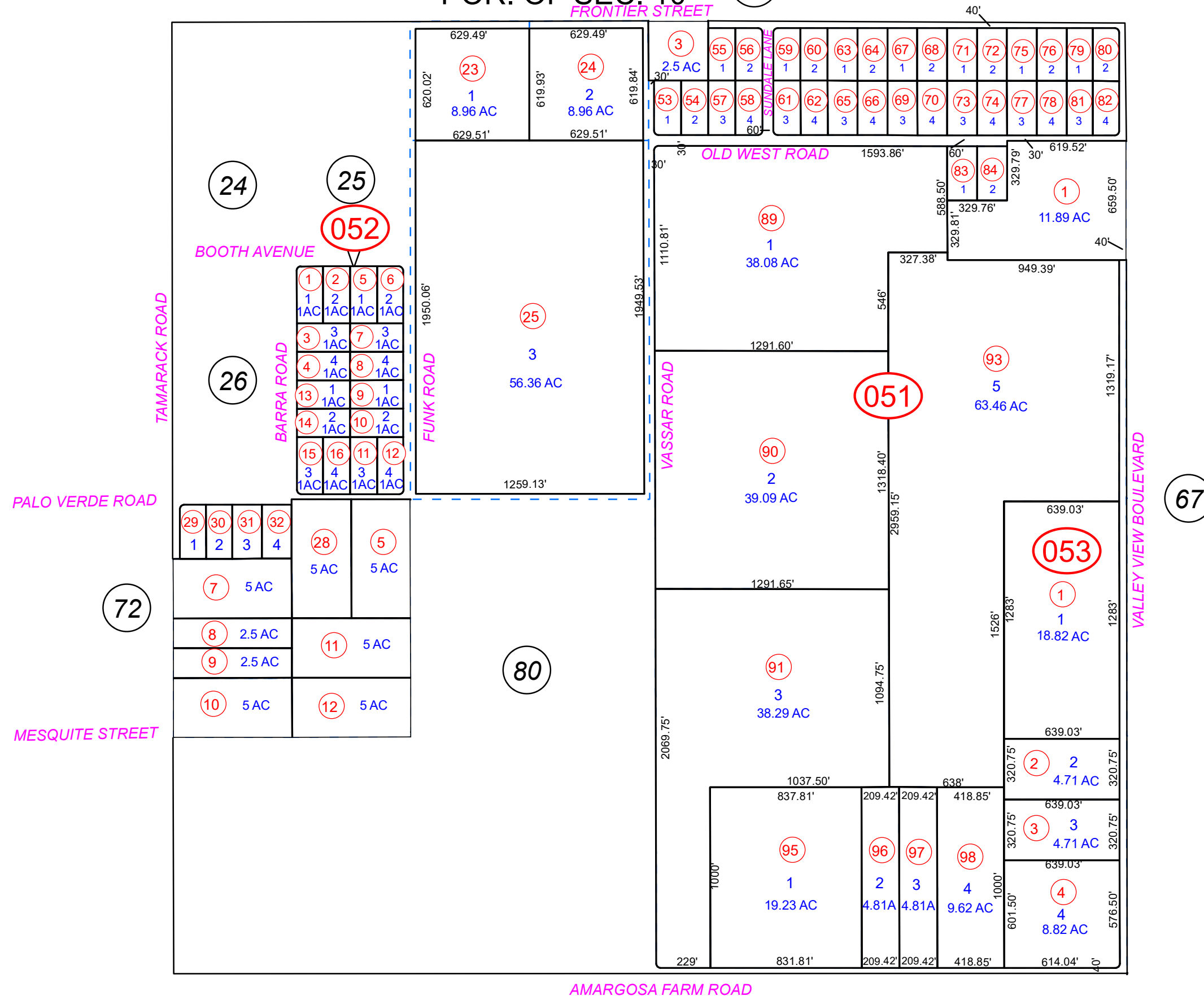


T16S, R48E  
 POR. OF SEC. 10 (03)



LEGEND

\* DENOTES LOTS THAT EXTEND TO THE MIDDLE OF THE STREET.

Plot Date: 4/15/2020

PREPARED BY  
**NYE COUNTY  
 ASSESSOR'S OFFICE**  
 Email: [assessor@co.nye.nv.us](mailto:assessor@co.nye.nv.us)



NOTE: THIS PLAT IS FOR ASSESSMENT USE ONLY AND DOES NOT REPRESENT A SURVEY. NO LIABILITY IS ASSUMED AS TO THE ACCURACY OF THE DATA DELINEATED HEREON.